

UAE PL STADIA REGULATIONS

SEASON 2023-2024



رابطة المحترفين الإماراتية
UAE PRO LEAGUE

CHAPTER 1: DEFINITIONS	5
CHAPTER 2: GENERAL.....	12
1. INTRODUCTION.....	12
2. SCOPE OF APPLICATION.....	12
CHAPTER 3: TECHNICAL AREA AND FIELD OF PLAY	13
3. FIELD OF PLAY.....	13
4. TECHNICAL AREA	13
5. WARM-UP AREA.....	13
6. GOALS AND SPARE GOAL.....	14
7. GIANT SCREEN / SCOREBOARD.....	15
8. PITCH PERIMETER ADVERTISING (COMMERCIAL AND NON-COMMERCIAL)	15
9. FLAGPOLES	16
10. BENCHES.....	16
11. UAE PL MATCH OFFICIALS' SEATING	17
CHAPTER 4: TECHNICAL ROOMS	18
12. TEAM DRESSING ROOMS	18
13. REFEREES' DRESSING ROOM	18
14. MEDICAL ROOM FOR PLAYERS AND OFFICIALS	18
15. DOPING CONTROL ROOM	19
16. UAE PL OFFICE	19
17. BALL KIDS' YOUTH PROGRAMME ROOM	19
18. STORAGE ROOMS	19
19. ADDITIONAL ROOMS	19
CHAPTER 5: SPECTRATOR SEATING AND FACILITIES.....	20
20. SEATING AND CAPACITY.....	20
21. TICKETS AND DEPOSITS BOOTHS	20
22. VVIPS /VIPS SEATING AND HOSPITALITY	21
23. PEOPLE OF DETERMINATION SPECTATORS	21
24. SPECTATOR TOILETS.....	21
25. SPECTATOR FIRST AID ROOMS.....	21
26. REVENUE GENERATING FACILITIES.....	23
27. ROOM SIGNAGE AND DIRECTIONAL SIGNAGE.....	23
CHAPTER 6: MEDIA AND BROADCAST	24

28.	MEDIA TRIBUNE	24
29.	PRESS CONFERENCE ROOM	24
30.	MEDIA CENTRE	25
31.	MIXED ZONE	25
32.	CAMERAMAN POSITION AND SEATS	26
33.	CAMERA POSITIONS.....	26
34.	COMMENTARY POSITIONS.....	27
35.	TV STUDIOS	27
36.	OB COMPOUND	27
37.	MEDIA REGISTRATION DESK	28
38.	MEDIA TOILETS	28
39.	BROADCASTER OFFICE	29

CHAPTER 7: FLOODLIGHTING AND POWER 30

.40	FLOODLIGHTS.....	30
41.	EMERGENCY LIGHTING AND POWER	31
42.	POWER	31

CHAPTER 8: SAFETY AND SECURITY..... 32

43.	SAFETY CERTIFICATION	32
44.	APPROVED EVACUATION PLAN.....	32
45.	PUBLIC ACCESS AND EGRESS.....	33
46.	CONTROL ROOM	33
47.	MONITORING SYSTEMS (CCTV)	34
48.	PUBLIC ADDRESS SYSTEM	35
49.	STADIUM GROUND RULES	35

CHAPTER 9: PARKING 37

50.	PARKING	37
-----	---------------	----

CHAPTER 10: FINANCIAL PROVISIONS..... 37

51.	COSTS	37
-----	-------------	----

CHAPTER 11: GENERAL PROVISIONS 38

52.	DISCIPLINARY MEASURES.....	38
53.	SPECIAL PROVISIONS	38
54.	RESPONSIBILITY & INDEMNITY	38

55. MATTERS NOT PROVIDED FOR AND FORCE MAJEURE	39
56. RATIFICATION	39
APPENDIX 8: FLOODLIGHT REQUIREMENT	40
APPENDIX 9: GROUND RULES	41
APPENDIX 10: PRODUCTION PLANS AND TV BROADCASTING CAMERAS AND MICROPHONES' POSITIONS	45
APPENDIX (11): GUIDELINES FOR THE FOOD AND BEVERAGES FACILITIES AT THE STADIUM.....	52

CHAPTER 1: DEFINITIONS

Country: United Arab Emirates

"AFC" shall mean the Asian Football Confederation

"FIFA" shall mean The Federation International de Football Association

"IFAB" shall mean the International Football Association Board

"UAE FA" shall mean the United Arab Emirates Football Association

"UAE PL" shall mean Pro-League Committee

"Football Association" shall mean the UAE Football Association

"WADA" shall mean **World Anti-Doping Agency**

NADO: shall mean **National Anti-Doping Agency**

"Quality Control Procedure" "The procedures that clubs must follow during the season regarding the competition, matches, events, and associated activities or events related to the competitions, as specified in the Competition Regulations or any of the UAE PL regulations, circulars, and decisions, for which a financial penalty is imposed for non-compliance."

"Stadia / Stadium" shall mean the venue / ground that the Host Club is using to play its home matches in UAE PL Competitions.

"Accreditation / Accredited" shall mean the giving of authority to a person or group of person, involving certification, which allows the accredited person(s) to undertake specified activities within the secured areas.

"Member(s)" shall mean the clubs who are members of the UAE FA in accordance to the Articles of Association

"Club(s)" shall mean the commercial entity and/ or the football company eligible to participate in the UAE PL competitions on behalf of the Member Club by virtue of a written contract between the UAE PL and the Club.

"Participating Team(s)" shall mean those teams participating in the UAE PL Competitions, under the authority of the Clubs and UAE PL during the Competitions.

"Circulars" shall mean directives or amendments to these Regulations that are sent to Participating Clubs in the form of official letters before and/or during the course of the League Season

"Commercial Affiliates" shall mean any entities that have acquired Commercial Rights from the UAE PL

Commercial Rights: all commercialization rights of the competition, including but limited to, broadcast rights, concession rights, hosting rights, photography rights, trading rights, marketing rights, sponsorship rights, travel and tours rights, new media rights, filming rights and/ or commercial utilization rights using any other means under the UAE FA statute.

"Referee(s)" shall mean the match officials appointed by the Referees' Committee as defined in the Competition Regulations

"Medical Staff" shall mean all medical professionals working in the clubs, which include doctors, nurses and physiotherapists, and massage specialists, and pharmacists and other medical practitioners and other licensed Health Authority of all concerned in each Emirate, in accordance with laws and regulations governing healthcare and medical liability in the state

"Force Majeure" shall be any event, or threatened event, affecting or which may affect the performance of any provision of this Agreement, arising from or attributed to acts, events, omissions or accidents which are beyond the reasonable control of a party, and shall include but not be limited to abnormally inclement weather, flood, lightning, storm, fire, explosion, earthquake, structural damage, epidemic or other natural disaster, war, terrorist action, military operations, riot, crowd disorder, strike, lock-outs or other industrial action, or civil commotion.

UAE Professional League (UAE PL) is the body formed by virtue of the decision of the General Authority for Sports No.(1) of 2019, and consists of the Professional Clubs eligible to participate for the sports season 2023-2024, and is responsible for the organization, marketing and investment of the competitions thereof.

UAE PL Board of Directors : it is the body elected by the UAE PL chaired by the UAE PL Chairman (FA vice-chairman) to perform the functions entrusted to him under the UAE PL Statutes.

"Technical Committee" the committee constituted by virtue of the resolution of the Board of Members of the UAE Pro League, and which undertakes the tasks stipulated for herein in this regulations in accordance with the internal statute and in coordination with the Competitions Committee with regards to mutual matters.

The Executive Department of the UAE PL: is the administrative sections in charge of the implementation of the regulations and the resolutions issued by the UAE PL Board of Directors

and to supervise the organization of competitions and to coordinate among the subcommittees and the professional clubs.

"Regulations" shall mean all regulations and / or policies controlled and published by the UAE PL and/or the Football Association to be used in connection with the Competition, including but not limited to the UAE FA Statutes, Code of Ethics, Disciplinary Code, the Competition Regulations, UAE PL Stadia Regulations, the UAE PL Equipment Regulations, the UAE PL Youth Programme Regulations, the UAE PL Accreditation Regulations, the UAE PL Media Regulations, the UAE PL Commercial / Marketing Regulations, UAE PL Club Workforce Regulations and the UAE PL Security Regulations Safety and Security Manual, and the circulars issued by the UAE PL

"Match(es)" shall mean all UAE PL Competitions' matches, including any deferred Matches and replays.

Facilities: the official areas and press centers/facilities, tickets kiosks and hosting areas used in relation to the competition matches held by the UAE PL. **"Host Club"** the club first-mentioned in in any of the Competition matches registered in the match schedule.

Hosting club/ stadium: The club or stadium decided by the UAE PL, or the club approved to host a match/ matches of the UAE PL competitions.

"Broadcast Affiliates" shall mean any entity(ies), including without limitation the Host Broadcaster, that have acquired from the UAE PL any rights in relation to the Broadcast Rights

"Host Broadcaster" shall means the entity appointed by the UAE PL to provide a certain range of core services in connection with the production of the basic audiovisual feed (or any supplemental feed) of any Match or Official Function

Broadcasting Rights: the right to broadcast the competition matches and entering the stadium for purposes of TV live broadcasting and/or radio broadcast and/or voice recording and/or audio-visual media recording in addition to obtaining licenses for live broadcast and/or recording and/or any of these matters in any form whatsoever or all forms of TV broadcast and/or radio or any other media existing nowadays or might exist in the future including all forms of land, wired and satellite TV broadcast, the internet, TV broadband (fixed and/or wireless), internet, interactive televisions, broadcasting by phone and any other electronic applications or other means and tools.

"The PL U21" shall mean the league competition organized by the UAE PL, participated by the Under 21 team of Clubs.

"ADNOC Pro League" shall mean the professional league organized by the UAE PL, participated by the first team of Clubs

"Referees Group" shall mean referees appointed by the UAE FA in accordance with the UAE FA regulations.

"Laws of the Game" shall mean the codified rules which are authorized and published by the International Football Association Board

"Prohibited Items List" shall mean the list of items which spectators are prohibited from taking into stadia used for any Competition Match, which shall be periodically communicated to Participating Clubs.

Ground Roles: the Roles imposed by the UAE PI in Appendix (9) of these regulations.

"ADIB Cup Competition" shall mean the annual competition organized by the UAE PL among its professional clubs.

"Disciplinary Code" shall mean the regulations concerned with settling the disputes related to infringements of the rules of the UAE PL and Football Association regulations, which do not fall in the jurisdiction of any other authorities of the UAE FA or any other authority as described in the Disciplinary Regulations

"Disciplinary Committee" shall mean the semi-judicial committee affiliated to the Football Association

Arbitration Panel Regulations: the regulations issued by the UAE FA to regulate the appeal process in the settlement of the decisions of the Appeal Committee and the Arbitration Committees in their appellate capacity by the members and the clubs

"Appeals Regulations" shall mean the regulations published by the Football Association which govern the process of appeals made by Members and Clubs on the decisions of the Disciplinary Committee.

"Appeals Committee" shall mean the semi-judicial committee affiliated to the Football Association competent to consider the appealed decisions of the Disciplinary Committee

"Cassation Committee" a semi-judicial committee of the UAE FA specialized in the settlement of the decisions of the Appeal Committee and the committees of arbitration in

their appellate capacity.

"Referees' Committee" shall mean the committee assembled by the Football Association responsible for all matters pertaining to referees, including the appointment of referees and assessors to League Matches

"UAE Pro League / UAE PL" shall mean the committee formed by virtue of the UAE FA statute, and consists of the professional clubs eligible to participate in the Professional League for the season 2019-2020, and is responsible to assume technical, financial, commercial, and administrative management and investment of the pro club competitions.

"Stadia Regulations" shall mean the regulations that set the requirements which shall be met by the stadium of the clubs participating in the competitions held by the UAE PL

Safety and Security Manual: the Manual which sets out the organizational procedures aiming at ensuring safety and security at the stadiums where UAE PL Competitions are held.

Youth Program Regulations: the Regulations delineating the roles and responsibilities of Ball Boys, Flag Bearers, and Players Escorts in all competitions organized by the UAE PL.

Accreditation Regulations: the Regulations that govern the enforcement of the Accreditation System in the Restricted Areas of the stadiums and their facilities.

"Competition Regulations" shall mean the Regulation that sets organizational and technical procedures pertaining to the various UAE PL Competitions.

"Match Commissioner" shall mean the UAE PL-appointed match official under these and other relative regulations.

"UAE PL Competitions" shall mean the ADNOC Pro League , PL U21, ADIB Cup Competition and Super Cup.

"Match Officials" shall mean the persons appointed by UAE PL to oversee the match including but not limited to the Match Commissioner, Media Officer and Access Control Officer.

Access Control Areas: the locations of the Matches and other events, such as (without limitation) Stadium and their fences and perimeters, the aerial space above the stadium, and all other locations associated with the Competition, including the Facility Areas, media centres, hospitality and VIP areas and facilities, other areas to which admission is regulation by the UAE PL Accreditation Regulations.

League Season: the period from the first football match organized under the auspices of the UAE PL (either in the UAE Super Cup, ADIBCup or the ADNOC Pro League) until the last football match organized by the UAE PL (either in the ADIB Cup or the ADNOC Pro League or the PL U21).

“Media” shall mean all members of the written press, on-line editors, photographers, television news crews and the representatives of the Broadcast Rights Holders entitled to media accreditation as determined by the UAE PL

“CAD drawings” shall mean detailed and accurate computer-aided design drawings to illustrate the design and layout of a stadium and/or club facilities.

“Commentary positions” equipped Commentary positions which include closed and sound proof rooms overlooking the field of play, and are equipped for the purpose of commentary on the events of matches. These rooms are housing TV and radio commentators and other media related to the match events

“Domestic power” shall mean power, generally from one single source (grid or generator) used to feed various consumers and areas including live TV activities.

“Emergency power” shall mean power source available in case of grid failure, generally produced by a fuel or gas generator (back-up power)

“Killed seats” shall mean a seat in the stadium that cannot be sold either because it is blocked by installations or the view is restricted or the person using the seat could obstruct the view of a camera.

“Net stadium capacity” shall mean total number of seats without any viewing obstructions which are available for sale or complimentary use.

“OB van” shall mean outside broadcast van used for the televised broadcast of the competitions and the television studios. The vehicle size may vary from a van to a truck with built-in video and audio equipment related to TV production”.

“Outer security zone” shall mean secure zone around the stadium, serving as the first ticket and accreditation checkpoint.

“PA system” shall mean public address system, designed to convey spoken messages to all areas of the stadium as the main means of communication between stadium management and spectators; for safety and security messages, it needs to be able to override all other sound systems.

“Pitch” shall mean secure area comprising the field of play and the auxiliary space around it.

“Safety & Security certificate” shall mean certificate issued by the relevant authorities declaring that the stadium complies with all relevant local building, fire, safety and security legislations.

“Stadium level map” shall mean floor plan of the stadium in a format specified by UEFA, indicating key spaces and functions on that stadium level.

“Technical Area” shall mean an area that relates to the designated seated area for technical staff and substitutes.

“Ticket booth” shall mean the facilities dedicated for tickets sales to fans on match days, and are located within walking distance of the stadium, but outside the main spectator flows.

“Vomitory” shall mean access route built into the gradient of the stand, which directly links spectator seats to concourses and/or routes for ingress, egress or evacuation.

“Video Referee Location”: the location allocated for video refereeing crew, near the players’ tunnel in the technical area. This location is equipped with a desk and the video refereeing device approved by the FIFA.

“Goal Lines Detective cameras”: the cameras used for the video refereeing technology to detect the goal lines. Such cameras are installed on special solid and non-vibrating stands that is 6 meters by 2 meters, placed in the stands at the same height as the offside cameras or higher, where the center of these stands is on the same line as the goal lines.

CHAPTER 2: GENERAL

1. Introduction

- 1.1 Based on criteria I.02 of the UAE Club Licensing Regulations, these regulations have been adopted.
- 1.2 The stadium shall be inside the UAE and shall be one of the stadiums approved by the UAE PL. The UAE PL may approve any other stadiums outside the UAE in case it decided to hold any matches outside the UAE. In any case, the stadium shall meet all requirements under criterion I.01 of the UAE Club Licensing Regulations, and any other applicable regulations of the UAE PL.

2. Scope of Application

- 2.1 These regulations are applicable to all the Clubs in the UAE PL Competitions.
- 2.2 These regulations govern the criteria to be fulfilled by a stadium in order for it to be classified (in ascending rank order) as UAE PL Category C, B, A and A+.
- 2.3 A stadium must at least fulfill all criteria in Category C in order to host matches of the PL U21. The stadium shall however fulfill all criteria in Category B if the match is broadcasted on TV provided that the club is notified at least 10 days before the match date.
- 2.4 A stadium must at least fulfill all criteria in Category B in order to host matches of the ADNOC Pro League and ADIB Cup. As for the Field measurements, the field shall be 105*68 M except for cases where the UAE PL deems it impossible to fulfill such requirement.
- 2.5 Stadium categorized as Category A or A+ indicate a higher level / quality of facilities available to all stakeholders.

CHAPTER 3: TECHNICAL AREA AND FIELD OF PLAY

3. Field of Play

- 3.1 All Competition matches shall only be played on natural turf or a mixed turf of a percentage that does not exceed 10%, and is approved by the FIFA.
- 3.2 The stadium be inside the UAE and it should be one of the stadia already approved by the UAE PL. In addition, the stadium shall meet the requirements as per criterion (I.01) of the UAE Club Licensing Regulations, and any other relative regulations of the UAE PL.
 - 3.2.1 The field of play should be equipped with:
 - 3.2.2 Water sprinklers,
- 3.3 An effective water drainage system in case of heavy rain
- 3.4 For field measurement and requirements, please refer to Appendix 1 of this regulation, and the Appendix of the Guidelines for preparing the field of play in the Operations Manual.

4. Technical area

A Technical Area must be drawn to clearly mark the seating area for technical staff and substitutes. The marking area must be done as follows:

- 4.1 Technical area must extend 1m on either side of the designated seated area (team bench) and extends forward up to a distance of 1m from the touch line.
- 4.2 The markings must be done in white color and the width of the markings shall be the same as the markings for the touch lines and the Appendix of the Guidelines for preparing the field of play in the Operations Manual.
- 4.3 The Technical Area shall be void of any kind of commercial advertisements.

5. Warm-up area

- 5.1 A warm-up area for substitutes must be made available along the touchlines or behind the advertising boards behind the goal.
- 5.2 The warm-up surface must be natural or artificial turf approved by the FIFA
- 5.3 For size, location and surface type of warm-up area, please refer to Appendix 1.

6. Goals and spare goal

- 6.1 Goalposts and crossbars must be in compliance with the Laws of the Game as promulgated by the International Football Association Board (IFAB) which means, in particular, that:
 - 6.1.1 The distance between the posts must be 7.32m;
 - 6.1.2 The distance from the lower edge of the crossbar to the ground must be 2.44m;
 - 6.1.3 The goalposts and crossbars must be white without any marks,
 - 6.1.4 Goalposts and crossbars must be made of approved materials in accordance with article 1/10 of the Laws of the Game. In addition, they should be in in a square, rectangular, round or elliptical.
 - 6.1.5 They must not pose any danger to players.
- 6.2 Two (2) spare goals, which can be easily installed if the circumstances so require, must be available within the Stadia. In case the spare goals are not provided but the match ended without the need for a spare goal, a fine of 10,000 AED will be imposed in accordance with QCP. However, if the match couldn't be started or completed due to the need for a spare goal, the following shall apply:
 - 6.2.1 Before the match: provisions of articles 26-5& 26-6 of the competition regulations shall apply,
 - 6.2.2 During the match: the referee waits for 30 minutes to allow the club to rectify the situation. If club was unable to rectify the situation during that period, the match will be cancelled and the host club will be the loser in match by result (3-0).
- 6.3 In case where there are posts supporting the goal nets, such posts shall be of a dark color, contrasting with the white goal posts.
- 6.4 For requirements of goals and spare goal, please refer to Appendix 1.

7. Giant Screen / Scoreboard

- 7.1 The Stadia must have a giant screen which is video enabled, and is capable of showing the match score and match clock.
- 7.2 The match clock must run from zero to forty-five (45) minutes for the first half and from forty-five (45) to ninety (90) minutes for the second half. Time must be stopped at the end of normal playing time in each half, i.e. after forty-five (45) and ninety (90) minutes respectively.
- 7.3 This stipulation shall also apply if extra time is played (i.e. after fifteen (15) minutes of each half).
- 7.4 For requirements of giant screen / scoreboard, please refer to Appendix 1.

8. Pitch Perimeter Advertising (commercial and non-commercial)

- 8.1 Advertising around (and/or on) the pitch and its immediate surrounding areas, via LED screens that belong to and will be provided by the UAE PL. This includes commercial and non-commercial advertising.
- 8.2 All kinds of advertisements whether real or virtual are not allowed on the Field of Play including the area of the goal net, the technical area or at a distance less than 1 meter from the field lines. This applies from the moment the players enter into the field until they leave at the end of the first half, and from the moment the players return on the second half until the final whistle. No kind of advertisements is allowed on the two goals, the goal nets, the corner posts or their flags. In addition, no kind of advertisements is allowed on the equipment like the cameras, microphones, etc. advertisements shall be on a straight line and shall be as follows:
 - 8.2.1 at least 1 meter away from the touch lines,
 - 8.2.2 at least 1 meter away from the goal net,
 - 8.2.3 at the same distance of the goal line and of the depth of the goal net.
- 8.3 LED screens shall be at the following distances:

- 8.3.1 at least five (5) meters away from the goal line,
- 8.3.2 At least three (3) meters away from the touchlines.
- 8.3.3 Points (8.3.1) and (8.3.2) apply depending on the size of the stadium and the available areas around the field of play, in a way that ensures enough space to put Host Broadcaster cameras, which need a distance of at least 2 meters behind the LED system.

8.4 The Host Club must ensure that the following are provided:

- 8.4.1 One permanent contact person from the Club for all LED matters;
- 8.4.2 Once communicated to the Club, free access to the stadium and pitch area to allow for installations of the LED screens;
- 8.4.3 Space on the pitch to allow for set up of the LED screens as shown in Appendix 7 in the UAE PL Marketing Regulations;
- 8.4.4 Power requirements as stated in Article 39 of the UAE PL Stadia Regulations; and
- 8.4.5 Private Security at all times to ensure safety of the LED screens.

8.5 In the event that the Host Club does watering of its pitch after the installation of the LED screen, the Host Club shall ensure that the LED screen is covered and protected from water.

9. Flagpoles

9.1 For requirements of flagpoles, please refer to Appendix 1

10. Benches

10.1 The Stadia must be equipped with two (2) covered benches at pitch level for the hosting club and the visiting club, each with seating room where seats which are affixed to the bench, can will be fixed, and have backrests positioned at least five (5) meters from the touchline. Moveable chairs are not allowed. Benches must be covered to protect against

bad weather and spectator misbehavior, taking into consideration that the top of the bench doesn't block the view of the touchlines to the main camera in the stadium

- 10.2 The Stadia must be equipped with one (1) covered bench at pitch level for Fourth Official with seating room for two (2) people.
- 10.3 For more details on the requirements of the benches, please refer to Appendix 1 of these regulations.

11. UAE PL Match Officials' seating

- 11.1 The Host Club shall reserve and clearly mark a number of seats (with tables), secured and away from public and media dedicated for the Match Commissioner, Referee Assessor and UAE PL Official, including a TV monitor with live feed of the match. For more details on the requirements of these seats, please refer to Appendix 1 of these regulations.

CHAPTER 4: TECHNICAL ROOMS

12. Team Dressing Rooms

- 12.1 The Stadia must have a minimum of two (2) dressing rooms; one for the home team and the other for the visiting team.
- 12.2 The Stadia must guarantee direct, private and protected access for the teams from their dressing rooms to the playing area and ensure their safe arrival at/departure from the Stadia. Access paths for teams can only be shared by the UAE PL Match Officials.
- 12.3 For more details on the requirements of the dressing rooms, please refer to Appendix (2) of these regulations.

13. Referees' Dressing Room

- 13.1 The Stadia must have an air-conditioned referees' dressing room.
- 13.2 The Stadia must guarantee direct, private and protected access for the referees from their dressing room to the playing area and ensure their safe arrival at/departure from the Stadia. Access paths for referees can only be shared by the UAE PL Match Officials.
- 13.3 For more details on the requirements of the referees' dressing room, please refer to Appendix (2) of these regulations.

14. Medical Room for players and officials

- 14.1 An emergency medical room located in close proximity to player's dressing room and the field of play, fully equipped with emergency medical supplies and supported by Medical Officer and trained medical staff in Emergency Medicine must be provided. For more details on the requirements of the medical room, please refer to Appendix (2) of these regulations.
- 14.2 The medical room must be easily accessible for stretchers and have water and power supply, and must be located in such a way that an injured person can be directly and expediently transported to the players and officials' ambulance.
- 14.3 Medical room must not be located inside one of the dressing rooms.
- 14.4 Parking spaces within the Stadia must be identified for two (2) ambulances with designated drivers equipped with oxygen, masks, defibrillator, I/V drip sets, emergency medicaments and trained medical staff, which shall be provided by the hosting club at its own expenses.

15. Doping Control Room

- 15.1 The Stadia must be equipped with a dedicated air-conditioned doping control room that is located near the team dressing rooms and is inaccessible to the public and the media.
- 15.2 The waiting room forms part of or is immediately adjacent to the testing room (a partition dividing the two areas is also acceptable). The toilet area must be within the testing room or immediately next to it and with direct private access to the testing room. It must contain a seated toilet as well as a sink with running water.
- 15.3 For more details on the requirements of the Doping Control room, please refer to Appendix (2) of these regulations.

16. UAE PL Office

- 16.1 The Stadia must be equipped with a dedicated air-conditioned office to be used by the UAE PL Match Officials, located near the team dressing rooms and is inaccessible to the public and the media. One (1) table and five (5) chairs. For more details on the requirements of the UAE PL room, please refer to Appendix (2) of these regulations.

17. Ball Kids' Youth Programme Room

- 17.1 The Stadia must be equipped with a dedicated room for ball kids, flag bearers and player escorts. For more details on the requirements of the Ball Kids Youth Programme room, please refer to Appendix (2) of these regulations.

18. Storage Rooms

- 18.1 The Stadia must be equipped with a minimum of two (2) air-conditioned storage rooms for the use of UAE PL and its Commercial Affiliates. For more details on the requirements of the storage rooms, please refer to Appendix (2) of these regulations.

19. Additional Rooms

- 19.1 In the event that UAE PL requires additional rooms, the Club must assist, using its best efforts, the UAE PL to obtain these rooms.

CHAPTER 5: SPECTRATOR SEATING AND FACILITIES

20. Seating and capacity

- 20.1 The Stadia must have a seating area divided into sectors, one of them to be reserved to visiting supporters, and another one for the home team. There must also be seating areas reserved for the Media, VIP and VVIP.
- 20.2 Each Club must submit to the UAE PL, by the deadline to be communicated, an accurate seating plan.
- 20.3 The VVIP tribune, VIP tribune and media tribune must be covered by a roof.
- 20.4 Apart from the VVIP, VIP and media tribune, each category of seats within the stadia must be capable of being divided into separate sectors – one area for home spectators and one area for visiting spectators).
- 20.5 All seats including the VVIP, VIP, media tribune CAT1, CAT2 and CAT3 seats must be numbered clearly and corresponding tickets / passes/ invitations must be produced by the Host Club.
- 20.6 For more details on the requirements for fans seating and stadium capacity, please refer to Appendix (3) of this regulation.

21. Tickets and Deposits booths

- 21.1 Except for C Category Stadia, there must ticketing booths, with one to be specifically assigned to away spectators at a strategic location in an area convenient for away team fans (near the away team fans entrance and/or away team fans parking area).
- 21.2 At least one deposits booth must be provided for the home team's fans and one booth for the visiting team's fans. It is possible to consider using a portion of the ticket booths to provide a deposits service by allocating at least one window, provided that the ticket booth area is not less than 15 square meters.
- 21.3 All tickets and deposits booths shall be air-conditioned and fully connected to electricity.
- 21.4 All ticket and deposits booths must be located at least 20m away from all gates and ideally should be located outside the perimeter of the stadium, within walking distance to the stadium.
- 21.5 For more details on the requirements of ticket booths, please refer to Appendix (3)

22. VVIPS /VIPS seating and hospitality

- 22.1 The Stadia must be equipped with individually covered and numbered VVIP and VIP seats that correspond with tickets and invites that are produced for each UAE PL match.
- 22.2 The Stadia must be equipped with at least one (1) hospitality room/lounge to cater for VVIPs and VIPs.
- 22.3 For more details on the requirements of the VVIP/ VIP seats, please refer to Appendix (3) of these regulations.

23. People of Determination spectators

- 23.1 There must be a specialized area for the people of determination seats (in addition to companion seats) in a safe and comfortable place, which allows a clear and unobstructed view of the field of play. For more details on the requirements of the people of determination and companions' seats, please refer to appendix 3 of this regulation.

24. Spectator toilets

- 24.1 The stadia must be equipped with seated toilets for both male and female spectators in each sector of the Stadia. For more details on the requirements of the spectators' toilets, please refer to Appendix (3) of these regulations.
- 24.2 In the event where building the required number of toilets is not possible, the host club shall rent mobile toilets. In this case, the host club shall provide a valid contract showing that such facilities have been rented at least two (2) weeks before the season. This contract shall cover the whole season duration.

25. Spectator First Aid rooms

- 25.1 Stadia must be equipped with at least one (1) first-aid room to care for spectators in need of medical assistance. The First-aid room should be supervised by a doctor or paramedic who holds a professional license authorized by the Ministry of Health or a government medical authority.
- 25.2 Must be located in a position which allows easy access from both inside and outside the stadium to spectators and emergency vehicles. The doors and passageways leading to them which are wide enough to allow access for a stretcher or a wheelchair;
- 25.3 The first-aid room must have bright lighting, good ventilation, heating, air conditioning,

electric sockets, hot and cold water, drinking water and toilet facilities for men and women;

25.4 The first aid room must be equipped so as to ensure management of any common acute life-threatening condition. The room must contain the following, as well as other items stated in the Appendix (3) of these regulations:

25.4.1 Airway equipment (oropharyngeal tubes of varying sizes; suction device – either manual or mechanical with tubing and suction catheters or a means of clearing vomitus from the patient's mouth if required);

25.4.2 Spinal immobilization equipment (a wooden spinal board or equivalent for spinal column immobilization and for patient carriage to or from the medical station, with accompany immobilization straps or equivalent; cervical spine immobilization devices; minimum of two functional stretchers);

25.4.3 Breathing equipment (reliable source of supplemental oxygen of at least 30 minute duration at 15 liters per minute, with accompanying face masks and oxygen tubing; self-inflating, bag-valve mask resuscitation kit with reservoir bag and appropriate-sized masks, a one way valve pocket mask with oxygen inlet nipple may be substituted as a second-best equivalent);

25.4.4 Circulation equipment (a manual - monophasic or biphasic – or automated external defibrillator (AED) is the minimum standard of care, adequate selection of trauma dressings, tapes, and plasters to control and dress external bleeding wounds; stethoscope, manual blood pressure apparatus, pupil torch)

25.4.5 Drugs (primary healthcare medications – notably oral paracetamol, ibuprofen, etc.; emergency medications – adrenaline, dextrose, antihistamine, etc); and

25.4.6 Miscellaneous medical equipment such as but not limited to syringes, needles, antiseptic solution and hazard container.

26. Revenue generating facilities

- 26.1 Stadia must be equipped with utilities and space that allow the Host Club to generate revenues on match day as follows:
- 26.2 The Host Club shall provide Food and Beverage sales booths for fans, according to the following:
 - 26.2.1 At least one booth for the home team's fans, and one for the visiting team's fans.
 - 26.2.2 The booths shall be easily accessible.
 - 26.2.3 The booths shall be able to serve at least 1000 fans.
- 26.3 In addition to what's mentioned in Article (26.2) herein above, the host club shall provide additional food and beverages sales points, including CAT1 fans, choosing from the following options: permanent, temporary or mobile sales points. For more details on the specifications of these options, please refer to Appendix (3).
- 26.4 For more details on the requirements of the revenue generating facilities, please refer to Appendix (11) of these regulations.

27. Room signage and directional signage

- 27.1 Stadia should have internal and external public direction signs presented in internationally understandable pictographic language.
- 27.2 Clear and comprehensive signposting must be provided on approach to stadia, the stadia surroundings and throughout stadia to point the way to the different sectors.
- 27.3 Critical facility areas including but not limited to dressing room, doping control room, broadcast office, media facilities, etc. must clearly display signage using the UAE PL template.
- 27.4 The club should place special signage for the people of determination, for example but not limited to, their car park, entries and exits, seating area and toilets).
- 27.5 In particular, all evacuation routes must be clearly indicated.

CHAPTER 6: MEDIA AND BROADCAST

28. Media Tribune

- 28.1 The media tribune must be located in a central position in the main grandstand where the media facilities are situated. It should be centrally located on the halfway line, in a position that provides an unobstructed view of the field of play, without the possibility of interference from spectators. Ideally, the media tribune should not extend beyond the 16m line towards the goals. The tribune must be well lit.
- 28.2 Wireless internet must be available at the media tribune area. The wireless internet must be password protected with the password clearly displayed at the media center.
- 28.3 There should be easy and exclusive access to and from other media areas such as the media center, the mixed zone and the press conference room.
- 28.4 For more details on the requirements of the Media Tribune, please refer to Appendix (4) of these regulations.

29. Press Conference Room

- 29.1 Except for "C" Category stadia, the Stadia must have an air-conditioned and well-lit press conference room. For more details on the requirements of the press conference room, please refer to Appendix (4) of this regulation.
- 29.2 A UAE PL-approved backdrop must be set up behind the Press Conference podium.
- 29.3 A sound system, with adequate XLR sound outputs (at least 4) and loudspeakers suitable for Q&As in the press conference. The sound system shall also provide one microphone for each participant at the podium.
- 29.4 Conference room, and specifically conference table, shall be well lit with 800 Lux lighting from each side (one lamp at each side WARM LIGHT/ SOFT) in addition to providing good lighting for the background to avoid forming any shadows.
- 29.5 There should be easy and exclusive access to and from other media areas such as the media center, the mixed zone and the media tribune. There must be at least two (2) entrances: one providing the players and coaches with quick access to the dressing room area and the other providing media representatives with quick access to other media areas.
- 29.6 There should be a technical person in charge of the press conference sound system and

lighting, who shall be available at the time of installing the Host Broadcasters' equipment before the match, and long enough before the use of the room and during the time of using the press conference room.

29.7 Provide a camera stand for TV broadcast as per Appendix No. (4)

29.8 Ensure the provision of special paths for the cameras cables.

30. Media Centre

30.1 An air-conditioned room must be provided for Media equipped with desks and access to communication facilities, located on the same side as the media tribune, press conference room and mixed zone.

30.2 For more details on the requirements of the requirements of the Media Center, please refer to Appendix (4) of these regulations.

30.3 Wireless internet must be available at the media center. The wireless internet must be password protected with the password clearly displayed at the media center.

30.4 There should be easy and exclusive access to and from other media areas such as the press conference room, the mixed zone and the press conference room.

31. Mixed Zone

31.1 Except for "C" category stadia, the Stadia must allocate an area, covered and unaffected by weather or surrounding noises, for the mixed zone. This area must be well-lit using spotlights to allow for TV interviews. The spotlights shall be placed behind the camera positions and directed towards the approved backdrop. The Mixed Zone must be in an area which is on the way from the dressing rooms to the teams transport area.

31.2 The paths for the head coaches and players must be separated from the media.

31.3 A UAE PL approved backdrop must be set up in the mixed zone on the opposite side of the media pathway and on same side as the player's path.

31.4 The mixed zone must be secure and must be accessible only to coaches, players and Media.

31.5 TV interviews area inside the Mix Zone room shall be well lit with 800 Lux lighting from each side (one lamp at each side WARM LIGHT/ SOFT) behind camera positions and pointed at the approved backdrop, with adequate lighting for the background to avoid forming any shadows.

31.6 For more details on the requirements of the mixed zone, please refer to Appendix (4) of these regulations.

32. Cameramen position and seats

32.1 The Club shall identify an area behind the LED and each goal line to accommodate the photographers on duty during the match.

32.2 The club shall provide minimum of (10) folding seats with back rests behind each goal for photographers. The seats shall be 80 cm (H), 47 cm (W), and 44 cm (D). please refer to Appendix (12) for more details.

32.3 For more details on the requirements of the photographer's positions, please refer to Appendix (4) of these regulations.

33. Camera positions

33.1 The UAE PL (and/or its Broadcast Affiliates) will visit each Club prior to the League Season and will determine and confirm each camera positions which shall be fixed for all UAE PL Competition Matches.

33.2 Except for "C" Category stadia, the Host Club must provide camera positions / platforms in accordance with Appendix (4) of this regulation.

33.3 The base of the main camera platform should be solid and non-vibrating, the surface must have a smooth, yet non-slip surface and capable to accommodate at least 3 cameras and the temperature monitoring system, at 6-8 meters length and 3 meters depth for the main stand, with a gradient of 28-35 degrees between the camera stand and the touchlines, which could change from one stadium to another according to the infrastructure of that stadium.

33.4 Safe and stable access must be provided by the Club to every platform.

33.5 Access to the platforms (including any steps up to it) must be kept clear at all times and not be blocked by seats, spectators, security or any other obstructions.

33.6 Camera positions may vary depending on the stadium according to the differences between the stadia and the height of each stand, in addition to the production plans for some matches. All production plans for camera positions during the season matches can be reviewed in Appendix (10) of this regulation.

- 33.7 Provide internet connection and power outlets in the main camera area for the thermal monitoring technology,
- 33.8 As for stadia from categories B, A and A+, the provide electrical outlet for the spider camera in the four corners around the pitch as follows (electricity should be uninterrupted D.C.):
- 32 AMP x4 (3phase) (5 Pins)

34. Commentary positions

- 34.1 Except for "C" Category Stadia, the Stadia must have at least 3 fully-enclosed and air-conditioned rooms which have unobstructed views of the entire pitch. In the event that fully-enclosed positions are not available and cannot be reasonably constructed, the UAE PL may allow the Stadia to provide non-enclosed commentary positions. For more details on the requirements and specifications of commentary positions, please refer to Appendix (4) of this regulation.
- 34.2 Provide external commentary locations if needed. This should be agreed upon during an on field visit to the stadium.
- 34.3 The commentary position and cabin shall be connected to a main power supply and an emergency power supply, and shall be connected to a wireless internet.
- 34.4 The rooms shall be soundproof and equipped in a way that prevents noise echo inside the room, and prevents noise coming from outside to the inside or the other way.

35. TV Studios

- 35.1 Except for "C" Category Stadia, the Stadia must be equipped with at least one (1) TV studio for match coverage. For more details on the requirements of TV Studios, please refer to Appendix (4) of these regulations.
- 35.2 Additionally, UAE PL may approve the set-up and utilization of a pitch view studios near the corner flags or where space permits, in the area behind the goals.

36. OB Compound

- 36.1 Except for "C" Category stadia, the Stadia must have an OB compound area, to accommodate two OB vans.
- 36.2 The area must be suitable for TV and Radio broadcast operations either for the use of a single or multiple parties of the Media Rights Holders and the Host Broadcaster, including

satellite transmission.

- 36.3 Ensure that the area is well lit and that there are secured access paths for the large vehicles, with a minimum total space of 700 square meters according to the diagram of each stadium, and in accordance with the TV Broadcast requirements.
- 36.4 The Host Club is responsible to provide security for the OB van area during the whole broadcast process. The OB van area shall also be clean and ready at least one day before the match. On the match day, from 6 hours before kick-off until 2 hours after the match, the OB van area shall be fully fenced and secured with at least 2 security personnel. Exception to this is the big matches such as the Super Cup, ADIB Cup Final and the Crowning match of the PL U21, where the area must be secured 24 hours prior to match kick-off.
- 36.5 Provide large trash bins inside the OB Compound area, and provide at least 2 fire extinguishers.
- 36.6 Provide a cleaner for the OBV area to make sure that the area and its toilet area, its rooms, facilities and toilets are always clean.

37. Media Registration Desk

- 37.1 Except for "C" Category Stadia, the Host Club shall set up a security controlled, dedicated media entrance at each Stadia.
- 37.2 A reception desk / area must be set up where accredited Media must register themselves prior to entry to the Stadia and where match tickets can be collected by Media.
- 37.3 For more details on the location and requirements of the media registration desk, please refer to Appendix (4) of these regulations.

38. Media Toilets

- 38.1 Except for "C" Category Stadia, stadia must have a minimum of two (2) dedicated seated toilet for media. For more details on the specifications and requirements of the media toilets, please refer to Appendix (4) of these regulations.
- 38.2 In case a permanent toilet cannot be established, Club shall rent portable toilets. In such cases, clubs shall submit to UAE PL, at least 2 weeks prior to the beginning of the season, a valid contract showing rental of such facilities. The contract period should cover all home matches for season.

39. Broadcaster Office

- 39.1 Except for "C" Category stadia, the stadia must have at least one (1) room dedicated as office space for broadcasters. The room should be provided with at least one toilet and should be in a close proximity from the OB compound. For more details on the requirements and specifications of the Broadcaster office, please refer to Appendix (4) of this regulation.

CHAPTER 7: FLOODLIGHTING AND POWER

40. Floodlights

- 40.1 Floodlights must meet the requirements stipulated for in Appendices (5&8) of this regulation. Club must provide to the UAE PL, at least 2 weeks prior to the season kick-off, a floodlight report in accordance to Form 11 of the Club Licensing System. The report must not be older than two (2) years from the date of the first match of the season. Any time during the season, the UAE PL has the right to request a new report for the illumination power of the floodlights in the stadium to make sure that the floodlights still meet the requirements.
- 40.2 Except for "C" Category stadia, and in order to ensure that the match can proceed in the event of a power failure, it is the responsibility of the Club to ensure that an independent backup power supply is available. For more details on the requirements of backup lights system, please refer to Appendix (5) of this regulation.
- 40.3 Club must provide UAE PL, at least two weeks prior to the season kick-off, with a copy of the contract which the Club has signed with a reputable back-up power supply company for all of its home matches for the season. If the Club fails to submit the contract by the deadline, the UAE PL has the right to contract a company, at the cost of the Club, to provide the independent backup power supply at all of the Club's home matches. In case the Club's power supply already has an uninterrupted power supply system, the Club shall inform the UAE PL and a test will be conducted accordingly.
- 40.4 Ensure that floodlights are properly operated during all matches including those held during the day, as this helps reduce the line between the areas under the sunlight and those that are shaded by other objects.
- 40.5 As for the modern floodlight systems which can be controlled and utilized for light shows before, during and after the match, such shows shall be approved in writing by the UAE PL before implementation. Request for approval on such shows shall include the mechanism of the show, shows timings and all other relative details.

41. Emergency Lighting and Power

- 41.1 Except for "C" Category Stadia, an emergency power supply must be provided, sufficient at the very least to enable emergency lighting, the public address system, access control systems, the CCTV system and all other life safety systems to function normally for at least three (3) hours. For more details on the emergency lighting and power requirements for these areas, please refer to Appendix (5) of these regulations.

42. Power

- 42.1 Power for Broadcast should be provided in accordance with relative articles of these regulations.
- 42.2 Club must ensure that there must be uninterrupted power supply in accordance with the relative requirements as per Appendix (5)
- 42.3 AS for (A+) and (A) stadia, power circuits for the following must be run on clearly marked, dedicated power circuits and must have back-up facilities:
- 42.3.1 OB van area
 - 42.3.2 LED
 - 42.3.3 Floodlights (as per relative articles of these regulations); and
 - 42.3.4 General operations purposes.
- 42.4 Power must be provided for LED as per the requirements stipulated in Appendix (5) of these regulations.
- 42.5 As for (A+), (A) and (B) stadia, an independent power box supply must be provided. The box must include all the required sockets, as well as the following (the power source must be Direct Current not Alternating Current):
- 1.** 1x 125 amp (3-phase)
 - 2.** 3x 63 amp (3-phase)
 - 3.** 1x 32 amp (3-phase)
 - 4.** 1x 21 amp (1-phase)

CHAPTER 8: SAFETY AND SECURITY

43. Safety Certification

- 43.1 The Club is responsible to ensure that their stadium structure is certified as being safe and fit for spectators in accordance with regulations of the local Civil Defense authority and the local Municipality, and that it fulfills the safety requirements.
- 43.2 The validity of the certification from both authorities must not be for more than two (2) years, and they shall be valid on the match day and available upon request.

44. Approved Evacuation Plan

- 44.1 The Host club must devise an evacuation plan for their stadium, approved by the Civil Defense which ensures that the whole stadium can be emptied in a case of emergency according to the applicable national law.
- 44.2 The evacuation plan must consist of an evacuation time, routes of evacuation for different stakeholders.
- 44.3 This plan must not be older than two (2) years from the time at which the stadium inspection is conducted.
- 44.4 The club must provide the evacuation plan as approved by the Civil Defense to the UAE PL.
- 44.5 The club shall perform a rehearsal evacuation for training purposes for all its safety and security officers, as well as events organizers at the club. The evacuation shall be performed in coordination with competent bodies, and shall be performed at least once in each sports season. The club shall provide the UAE PL with evidence of having performed such evacuation.

45. Public access and egress

45.1 The stadium must also fulfill the following requirements:

45.1.1 All parts of the stadium and its stands, including the external areas adjacent to the fans' entrances, exits, stairways, doors, passages, roofs, all public and private areas and rooms, etc. must comply with the safety standards which ensures the safety of all stadium users of any injuries or any incidents that may affect the public health.

45.1.2 All public passageways and stairways in the spectator areas must be painted in a bright colour (e.g. yellow), as must all gates leading from the spectator areas into the playing area, and all exit doors and gates leading out of the stadium;

45.1.3 Clubs must establish procedures so that all public passageways, corridors, stairs, doors, gates, etc. are kept free of any obstructions that could impede the free flow of spectators during any match or event;

45.1.4 All exit doors and gates in the stadium, and all gates leading from the spectator areas into the playing area, must open outwards away from the spectators, and must remain unlocked while spectators are in the stadium. Each and every such door and gate must be attended at all times by a specially appointed steward, to guard against abuse and ensure immediate escape routes in the event of any emergency evacuation. In order to prevent illegal entry or intrusion, these doors and gates may be fitted with a locking device, which may be operated simply and quickly by anyone from within. Under no circumstances must they be locked with a key during the time that spectators are in the stadium; and

45.1.5 In order to protect those on the field or in other parts of the stadium from lightning strikes, the stadium should be equipped with the appropriate safety devices.

46. Control Room

46.1 Except for "C" Category stadia, each stadium must have a control room which ensures an

overall view of the inside of the stadium in order to ensure constant control of safety, security and service conditions, and where necessary, the optimum handling of emergencies.

- 46.2 Stadia must have a CCTV system according to the requirements stipulated in Article 47 below. In addition, CCTV systems must be centrally monitored through the Control Room.
- 46.3 For more details on the requirements of the Control Room, please refer Appendix (6) of this regulation.

47. Monitoring Systems (CCTV)

- 47.1 The stadium must obtain a compliance certificate for the installation and operation of Closed-Circuit Television (CCTV) cameras from the relevant local authorities in each emirate. The CCTV coverage should include the following areas:
 - 47.1.1 All entry and exit points.
 - 47.1.2 Entrances to the field of play.
 - 47.1.3 Spectator areas inside the stadium.
 - 47.1.4 Staircases and corridors.
 - 47.1.5 Food and beverage sales points.
 - 47.1.6 Broadcasting area.
 - 47.1.7 Player and match officials' bus entry and exit points.
 - 47.1.8 Corridors leading to players' and officials' dressing rooms.
 - 47.1.9 Players' entrances to the field of play.
 - 47.1.10 Other main facilities within the stadium, including but not limited to conference rooms, media centers, generator areas, etc.
- 47.2 The stadium must ensure that CCTV cameras are installed, and that the operating system is efficient, comprehensive and equipped with control system monitoring screens located in the Control Room, and should cover areas specified by the relevant licensors.
- 47.3 The primary function of the CCTV systems is to enable staff within the Control Room to monitor potential events or problems, to help assess the situation, determine courses of action, and respond as needed.
- 47.4 The secondary function of these systems is to save video recordings for use in incident

investigations, as a guide or training cases.

- 47.5 The personnel in charge of the CCTV systems must be well trained and qualified to operate these systems, and should be trained to analyze, interpret, use and store the data recorded by these systems.
- 47.6 Visible signs should be placed in multiple locations inside and outside the stadium to inform the public of the location of these CCTV cameras.

48. Public Address System

- 48.1 The Stadia must be equipped with a public address system which is coordinated with the giant screen with high quality which ensures the messages can be delivered to the public areas inside and outside the Stadia. The public address system must be capable of communicating with all spectators inside and outside the stadium, covering all turnstiles, gates, toilets, concourses, and terraces. The public address system should override all other sound and entertainment systems. For more details on the requirements of the Public Address System, please refer to Appendix (6) of this regulation.
- 48.2 It is the responsibility of the Club to ensure that this public address system is maintained at all times through-out the UAE PL Competition season.
- 48.3 Provide a sound system, with adequate XLR sound outputs (at least 4)

49. Stadium Ground Rules

- 49.1 Each stadium must issue stadium ground rules (in Arabic and English) and affix them to the spectator access points. These rules must provide information on at least the following:
 - 49.1.1 admission rights and responsibilities;
 - 49.1.2 dress code;
 - 49.1.3 abandonment or postponement of events;
 - 49.1.4 description of prohibitions and penalties, such as entering the field of play, throwing objects, use of foul or abusive language, racist behavior, etc.;
 - 49.1.5 restrictions with regard to alcohol, fireworks, banners, etc.;
 - 49.1.6 seating rules;

49.1.7 causes for ejection from the ground; and

49.1.8 Risk analysis specific to the stadium.

49.2 Suggested text for the Ground rules is provided in Appendix 9 of these Regulations.

CHAPTER 9: PARKING

50. Parking

- 50.1 Parking spaces for the UAE PL, media, Host Broadcaster, VIP, VVIP, and medical team vehicles should be provided appropriately. For more details on the required locations and number of these parking slots, as well as the other relative requirements, please refer to Appendix (7) of these regulations.

CHAPTER 10: FINANCIAL PROVISIONS

51. Costs

- 51.1 Unless otherwise explicitly stated, all costs related to the implementation and compliance of these Regulations is the responsibility of the Host Club.

CHAPTER 11: GENERAL PROVISIONS

52. Disciplinary Measures

- 52.1 Disciplinary measures and appeals are dealt with in compliance with the current UAE FA regulations and the UAE PL's regulations and circular(s).
- 52.2 The UAE PL may initiate investigations should it suspect and / or is aware of any violations of the current UAE FA regulations and the UAE PL's regulations and circular(s).
- 52.3 The UAE FA Disciplinary Committee may impose the disciplinary measures for violations of the current UAE FA regulations and the UAE PL's regulations and circular(s).

53. Special Provisions

- 53.1 The imposition of the penalties provided for under the Quality Control Procedure (QCP) shall not prejudice the penalties provided for in other Regulations, laws and guidelines issued by the Football Association or UAE PL.
- 53.2 Any provision contained in any regulation or decision contrary to this Regulation shall be null and void.

54. Responsibility & Indemnity

- 54.1 The UAE PL may appoint third parties to act as brokers or agents on its behalf and/or as services providers with respect to delivery of UAE PL's obligations in the Regulations.
- 54.2 The UAE PL declines all responsibility in the event of conflicts arising from contracts between a club or any of its players, officials, employees, representatives or agents and any third party (including, without limitation, their sponsors, suppliers, kit manufacturers, broadcasters, agents and players) on account of the provisions of these regulations and/or any other UAE PL regulations and such persons' obligations thereunder.
- 54.3 Each club shall indemnify, defend and hold the UAE PL, its commercial partners and/or any third party operating as service providers and/or on the UAE PL's behalf and all of their officers, directors, employees, representatives, agents and other auxiliary persons free and harmless against any and all liabilities, obligations, losses, damages, penalties, claims, actions, fines and expenses (including reasonable legal expenses) of whatsoever kind or nature resulting from, arising out of, or attributable to any non-compliance by the club or

any of its players, officials, employees, representatives or agents with these regulations and/or any other UAE PL regulations.

55. Matters not provided for and Force Majeure

- 55.1 If a requirement arises for any other facilities other than those already mentioned in these Regulations, then the Club must provide full assistance to the UAE PL to find the required space and/or facilities.
- 55.2 The Board of Directors of the UAE PL has the right to make decisions on matters not provided for in these Regulations, whose decisions are final and unappealable before any judicial or arbitrary bodies or entities.
- 55.3 The Board of Directors of the UAE PL has the right to make decision on cases of force majeure and states of emergency, and such decisions are final and unappealable before any judicial or arbitrary bodies or entities.

56. Ratification

- 64.1. These regulations are prepared and set by the Executive Department of the UAE PL and ratified by the UAE PL Board on 23/06/2023.

APPENDIX 8: Floodlight requirement

	Vertical illuminance			Horizontal illuminance			Properties of lamp	
	Ev cam ave	Uniformity		Eh ave	Uniformity		Colour temperature	Colour rendering
Calculation towards	Lux	U1	U2	Lux	U1	U2		
Fixed camera	2,000	0.5	0.65	2,500	0.6	0.8	>4,000	≥65
Field camera (pitch level)	1,400	0.35	0.6					

APPENDIX 9: Ground Rules

Notice: Entry to the Ground is expressly subject to acceptance by any person present in the stadium of UAE PL regulations as well as Ground Regulations of relevant stadium in respect of the relevant match and (for other Events organized by the UAE PL)

"Ground" means **[NAME OF STADIUM]** and all locations owned, occupied or utilized by **[NAME OF OWNER OF STADIUM]**.

"Event" means any event organized by UAE PL that is taking place at the Ground.

"[NAME OF STADIUM]" means [FULL NAME OF STADIUM].

1. Permission to enter or to remain within the Ground (whether with a match ticket or any other type of entry permission issued by the UAE PL or the Club) is at the absolute discretion of **NAME OF STADIUM** the Match Organizer, any police officer or UAE PL authorized steward. On no account will admission to any Event be granted to any person not in possession of a valid ticket or entry permission from the Organizer. On no account will admission be granted to a person who is the subject of a current Banning Order.
2. All employees and personnel working for the Match Organizer, or any person present in the stadium, whether who attend the match with ticket or accreditation card, are committed to adhere to the dress code acceptable and non-contradictory with the traditions of the UAE. Any person who doesn't adhere to such dress code will be refused entry.
 - a. Those working on the pitch, should wear: sports shoes. As for those who don't work on the pitch or slippers only with the UAE traditional dress.
3. **[NAME OF STADIUM]** excludes to the maximum extent permitted by law any liability for loss, injury or damage to persons/property in or around the Ground.
4. No guarantees can be given by **[NAME OF STADIUM]** that an Event will take place at a particular time or on a particular date and **[NAME OF STADIUM]** reserves the right to reschedule the Event without notice and without any liability whatsoever.
5. In the event of the postponement or abandonment of the Event, refunds (if any) should be claimed in accordance with the relevant ticket terms and conditions. **[NAME OF STADIUM]** will have no other liability whatsoever, including (but not limited to) any indirect or consequential loss or damage, such as (but not limited to) loss of enjoyment or travel costs.

6. All persons seeking entrance to the Ground acknowledge **[NAME OF STADIUM]**'s right to search any person and their belongings whether outside or inside the Ground and to refuse entry to or eject from the Ground any person refusing to submit to such a search.
7. The list of articles which must not be brought into the Ground include, but the list is not exhaustive: knives, fireworks, explosives, smoke canisters, aerosols, air-horns, noisemakers, flares, weapons, dangerous or hazardous items, illegal substances, laser devices, bottles, glass vessels, cans, poles, or any article that may be used as a weapon and/or compromise public safety or which may pose a hazard or nuisance to any other person, or any article to be used for a commercial or a charitable purpose. Any person in possession of such items will be refused entry to or ejected from the Ground.
8. Threatening, abusive or violent behavior, and foul or abusive language is strictly forbidden and will result in arrest and/or ejection from the Ground. **[NAME OF STADIUM]** may impose a ban from the Ground as a result.
9. Causing damage to, or interfering or tampering with any equipment, furniture, fitting or fixture within the Ground will result in arrest and/or ejection from the Ground.
10. Racial, homophobic, political or discriminatory abuse, chanting or harassment is strictly forbidden and will result in arrest and/or ejection from the Ground. **[NAME OF STADIUM]** may impose a ban from the Ground as a result.
11. The following acts are offences and may result in being banned from entering the Ground:
 - a. The throwing of any object within the Ground without lawful authority;
 - b. The chanting of anything of an indecent or racist nature, or expression of censure on any of the players of either team or the referees or any of the game elements;
 - c. The entry onto the playing area or any area to which spectators are not generally admitted without lawful authority;Such acts will result in arrest and/or ejection from the Ground.
12. All persons entering the Ground may only occupy the seat allocated to them by their ticket and must not move from any one part of the Ground to another without the express permission or instruction of any steward, officer of **[NAME OF STADIUM]** and/or any police commissioner.
13. Fans may stand in their seating area whilst play is in progress to cheer up for their team. For safety and security reasons, and avoid blocking the view for other spectators, persistent

standing in seated areas during an Event is strictly forbidden and may result in ejection from the Ground.

14. The obstruction of gangways, access ways, exits and entrances, stairways and like places is strictly forbidden. Nobody entering the Ground shall be permitted to climb any structures within the Ground.
15. Smoking at the Ground is strictly forbidden. However, spectators who wish to smoke, may leave the stadium and re-enter before or during the match.
16. Mobile telephones and other communications devices are permitted within the Ground provided that they are used for personal and private use only.
17. The following acts are offences for which a person can be arrested by a police commissioner and conviction may result in being banned from entering the Ground:
 - a. Attempting to enter the Ground or being inside the Ground whilst drunk;
 - b. Being in possession of any intoxicating liquor, or bottle, can or other portable container and which could cause damage or personal injury when entering the Ground or in a public area of the Ground from which the event can be directly viewed;Such acts will result in arrest and/or ejection from the Ground.
18. Any individual who has entered any part of the Ground designated for the use of any group of supporters to which they do not belong may be ejected from the Ground either for the purposes of their own safety or for any other reason.
19. No person (other than a person who holds an appropriate license) may bring into the Ground or use within the Ground any equipment which is capable of recording or transmitting (by digital or other means) any audio, visual or audio-visual material or any information or data in relation to the Event or the Ground.
20. No goods (including literature) of any nature may be offered either free or for sale by any person within the Ground without the express written permission of **[NAME OF STADIUM]**.
21. No sponsorship, promotional or marketing materials may be brought into, used or displayed by any person within the Ground without the express written permission of **[NAME OF STADIUM]**.
22. Tickets are not transferable and may not be offered for sale without the prior written permission of **[NAME OF STADIUM]** or the UAE PL. Any tickets offered for sale may be

confiscated by any steward, officer of **[NAME OF STADIUM]** or any police commissioner. **[NAME OF STADIUM]** reserves the right to refuse admission to or eject from the Ground any person who has transferred their ticket in contravention of the Event ticket terms and conditions. Tickets remain the property of **[NAME OF STADIUM]** or the Event organiser at all times.

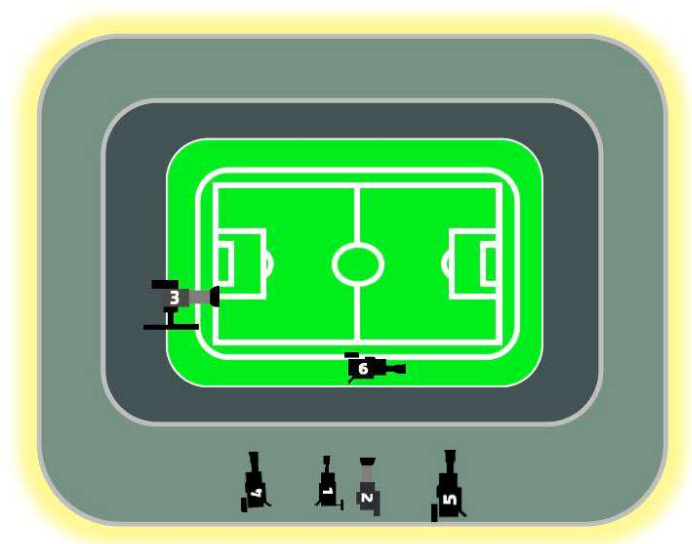
23. CCTV cameras are in use around and in the Ground and **[NAME OF STADIUM]** may itself use, or pass to the police or any Event organiser or other relevant authority, any recordings for use in any proceedings.
24. At all times whilst present in the Ground, persons must comply with any and all instructions of any steward or officer of **[NAME OF STADIUM]** and/or any police commissioner. Failure to comply with any instruction may lead to immediate ejection from the Ground.
25. Responsibility for minors remains at all times with a parent or guardian.
26. Re-admission to the Ground is permitted after wearing wristbands or any other form of re-admission tools provided by the Match Organizer.
27. **[NAME OF STADIUM]** reserves absolutely the right to eject from the Ground any person failing to comply with any of the Ground Regulations or whose presence within the Ground is, or could reasonably be construed as constituting a source of danger, nuisance or annoyance to any other person. This could lead to further action including, but not limited to, a ban from the Ground or proceedings being taken.
28. Entry to the stadium parameters is an express consent on using the person's video footages or photos by the UAE PL or other authorized parties and/ or the stadium with no financial compensation for the use of such photos or videos. In addition, any person who is present during events organized by the UAE PL may not request their photos or videos to be deleted.
29. Fans may only enter food and beverages sold by authorized providers within events area, with a strict adherence to the List of Prohibited Items.

Appendix 10: Production plans and TV broadcasting cameras and microphones' positions

Note: Production plans and TV broadcasting cameras and microphones' positions vary with different matches and different stadia, while microphones distribution plan remains the same throughout the season. The following is a presentation of the cameras distribution plans for the whole season, while there will be a variation in the number and position of these cameras (does not include camera position plans for video refreeing technology)

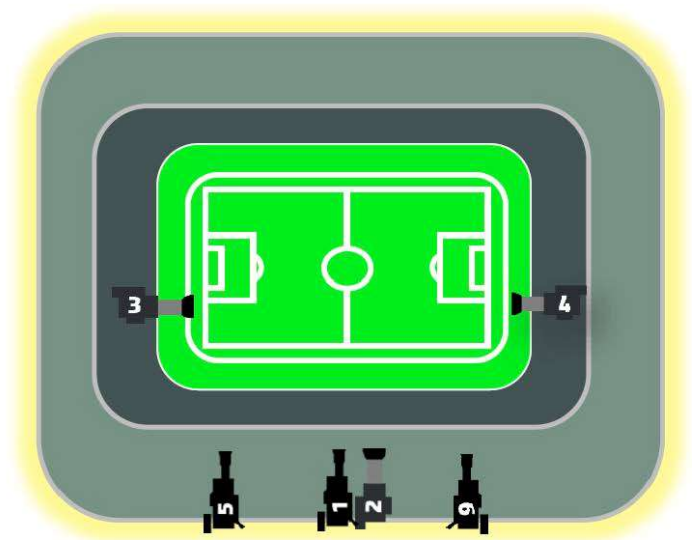
6 CAMERAS - OPTION A

#	Camera	اسم الكاميرا	#
1	MAIN CAM	الكاميرا الرئيسية	1
2	MAIN CLOSE	الكاميرا الرئيسية ذات البعد الأقرب	2
3	GOAL LEFT SUPER SLOMO	كاميرا السرعة البطيئة اليسرى	3
4	16M LEFT	كاميرا خط 16 متر اليسرى	4
5	16M RIGHT	كاميرا خط 16 متر اليمنى	5
6	SHOULDER /Tripod cam	الكاميرا المحورية	6



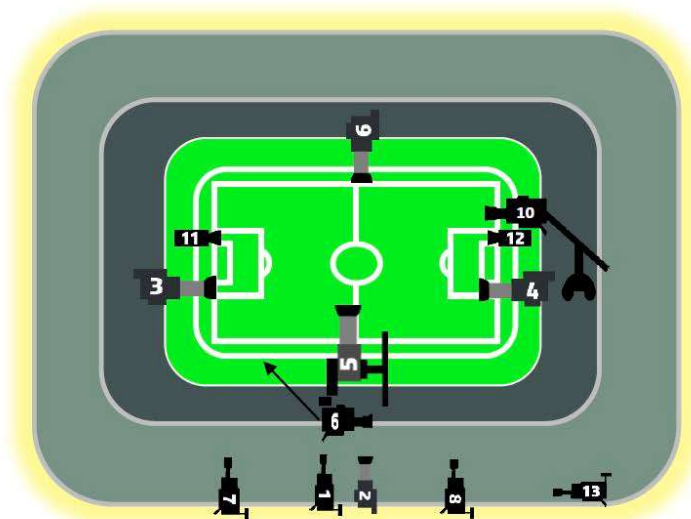
6 CAMERAS - OPTION B

#	Camera	اسم الكاميرا	#
1	MAIN CAM	الكاميرا الرئيسية	1
2	MAIN CLOSE	الكاميرا الرئيسية ذات البعد الأقرب	2
3	GOAL LEFT SUPER SLOMO	كاميرا السرعة البطيئة اليسرى	3
4	GOAL RIGHT	كاميرا أعاداة الجهة اليمنى	4
5	16M LEFT	كاميرا خط 16 متر اليسرى	5
6	16M RIGHT	كاميرا خط 16 متر اليمنى	6



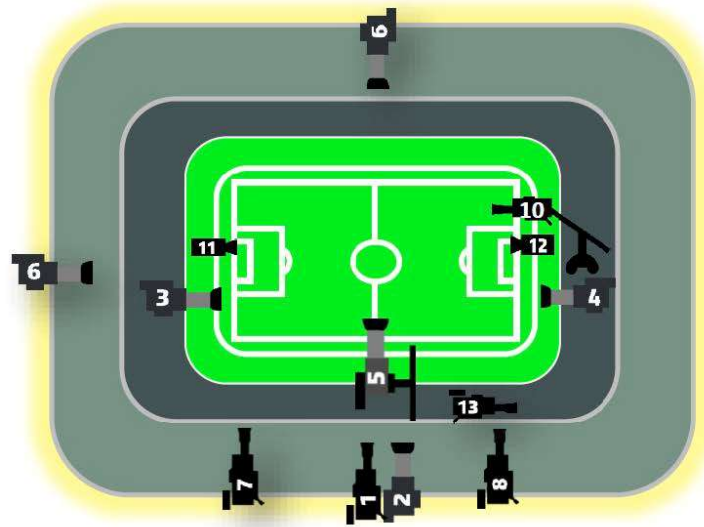
13 CAMERAS - OPTION A

#	Camera	اسم الكاميرا	#
		الكاميرا الرئيسية	1
1	MAIN CAM	الكاميرا الرئيسية ذات البعد الأقرب	2
2	MAIN CLOSE	كاميرا السرعة البطيئة اليسرى	3
3	GOAL LEFT SUPER SLOMO	كاميرا السرعة البطيئة اليمنى	4
4	GOAL RIGHT	الكاميرا المحورية	5
5	ORBITER	كاميرا المقابلات + رنود الأضواء + المنطقة المختلطة	6
9	REVERCE ANGLE	كاميرا خط 16 متر اليسرى	7
7	16M LEFT	كاميرا خط 16 متر اليمنى	8
8	16M RIGHT	كاميرا الزاوية العكسية	9
6	BENCH+FLASH+ MIXEDZONE+SIDE	كاميرا الدراع المنحرك	10
10	JIB	الكاميرا داخل المرمى الأيسر	11
11	IN-GOAL LEFT	الكاميرا داخل المرمى الأيمن	12
12	IN-GOAL RIGHT	كاميرا المؤتمن الصحفي	13
13	PRESS CONF.		



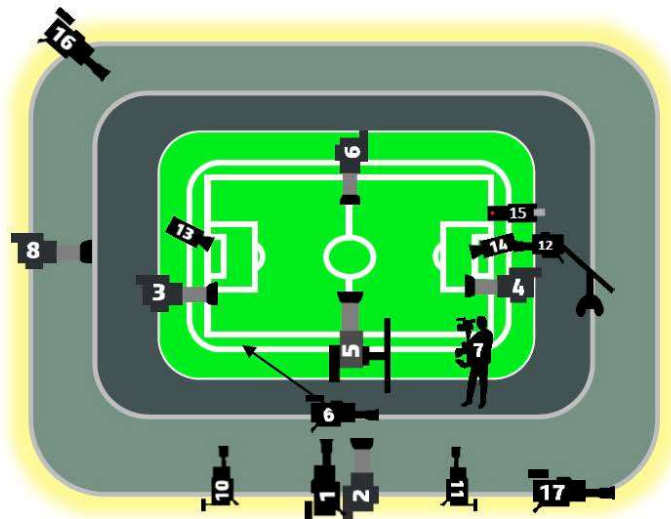
13 CAMERAS - OPTION B

#	Camera	اسم الكاميرا	#
1	MAIN CAM	الكاميرا الرئيسية	1
2	MAIN CLOSE	الكاميرا الرئيسية ذات البعد الأقرب	2
3	GOAL LEFT SUPER SLOMO	كاميرا السرعة البطيئة اليسرى	3
4	GOAL RIGHT	كاميرا السرعة البطيئة اليمنى	4
5	ORBITER	الكاميرا المحورية	5
6	HIGH BEHIND GOAL	الكاميرا المرتفع خلف المرمى	6
7	16M LEFT + PRESS CONF.	كاميرا خط 16 متر اليسرى + المؤتمر الصحفي	7
8	16M RIGHT	كاميرا خط 16 متر اليمنى	8
9	REVERCE ANGLE HIGH / LOW	كاميرا الزاوية العكسية مرتفعة / منخفضة	9
10	JIB	كاميرا الذراع المتحرك	10
11	IN-GOAL LEFT	الكاميرا داخل المرمى الأيسر	11
12	IN-GOAL RIGHT	الكاميرا داخل المرمى الأيمن	12
13	BENCH+FLASH+ MIXEDZONE+SIDE	كاميرا الملاحظات + ردود الأفعال + المنطقة المختلطة	13



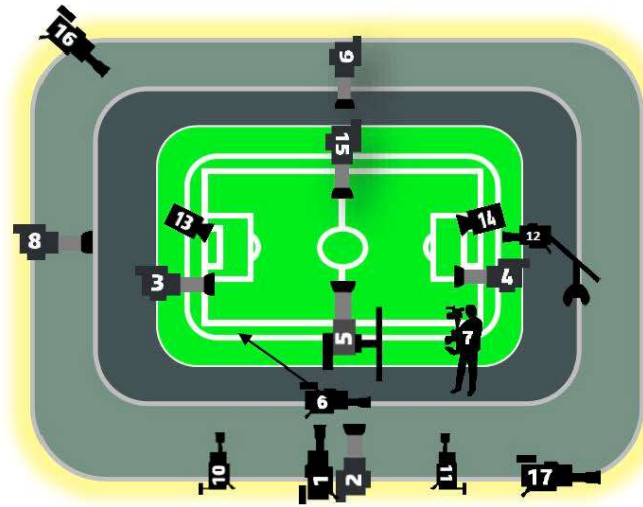
17 CAMERAS – OPTION A

#	Camera	اسم الكاميرا	#
1	MAIN CAM	الكاميرا الرئيسية	1
2	MAIN CLOSE	الكاميرا الرئيسية ذات البعد الأقرب	2
3	GOAL LEFT SUPER SLOMO	كاميرا السرعة البطيئة اليسرى	3
4	GOAL RIGHT	كاميرا أعاليات الجهة اليمنى	4
5	ORBITER	الكاميرا المحورية	5
15	HYPER MOTION	كاميرا الملاحظات + ردود الأفعال + المنطقة المختلطة	6
7	STEADICAM	الكاميرا المتحركة المستقرة	7
8	HIGH B-GOAL	الكاميرا المرتفع خلف المرمى	8
9	REVERCE ANGLE	كاميرا الزاوية العكسية	9
10	16M LEFT	كاميرا خط 16 متر اليسرى	10
11	16M RIGHT	كاميرا خط 16 متر اليمنى	11
12	JIB	كاميرا الذراع المتحرك	12
13	IN-GOAL LEFT	الكاميرا داخل المرمى الأيسر	13
14	IN-GOAL RIGHT	الكاميرا داخل المرمى الأيمن	14
6	BENCH+FLASH+ MIXEDZONE+SIDE	الكاميرا الملاحظة السرعة	15
16	BEAUTY CAM	كاميرا الزاوية الجمالية للتلعب	16
17	PRESS CONF.	كاميرا المؤتمر الصحفي	17



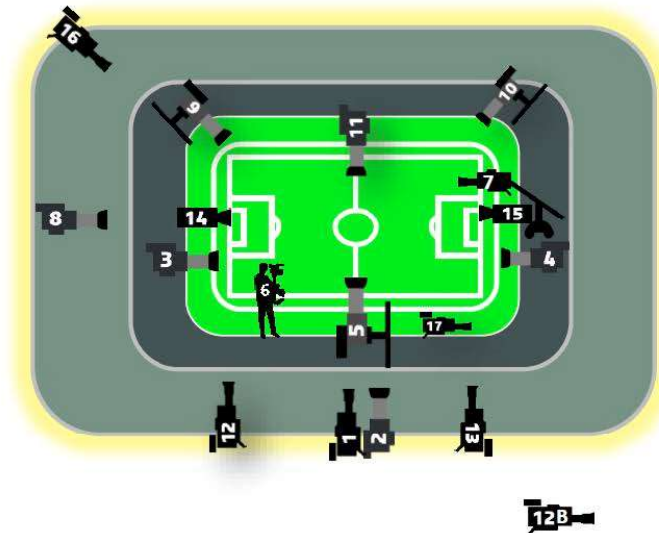
17 CAMERAS – OPTION B

#	Camera	اسم الكاميرا	#
1	MAIN CAM	الكاميرا الرئيسية	1
2	MAIN CLOSE	الكاميرا الرئيسية ذات البعد الأقرب	2
3	GOAL LEFT SUPER SLOMO	كاميرا السرعة البطيئة اليسرى	3
4	GOAL RIGHT Super slomo	كاميرا السرعة البطيئة اليمنى	4
5	ORBITER	الكاميرا المحورية	5
6	BENCH+FLASH+ MIXEDZONE+SIDE	كاميرا المقاعدات + ردود الأفعال + المنطقة المختلطة	6
7	STEADICAM	الكاميرا المنحركة المحمولة	7
8	HIGH B-GOAL	الكاميرا المرتفعة خلف المرمى	8
9	REVERCE ANGLE HIGH	كاميرا الزاوية العكسية مرتفعة	9
10	16M LEFT	كاميرا خط 16 متر اليسرى	10
11	16M RIGHT	كاميرا خط 16 متر اليمنى	11
12	JIB	كاميرا الذراع المنحرفة	12
13	IN-GOAL LEFT	الكاميرا داخل المرمى الأيسر	13
14	IN-GOAL RIGHT	الكاميرا داخل المرمى الأيمن	14
15	HYPER MOTION REVERCE ANGLE	الكاميرا الفلقة السرعة الزاوية العكسية	15
16	BEAUTY CAM	كاميرا الزاوية الجمالية للطلح	16
17	PRESS CONF.	كاميرا المؤتمر الصحفي	17



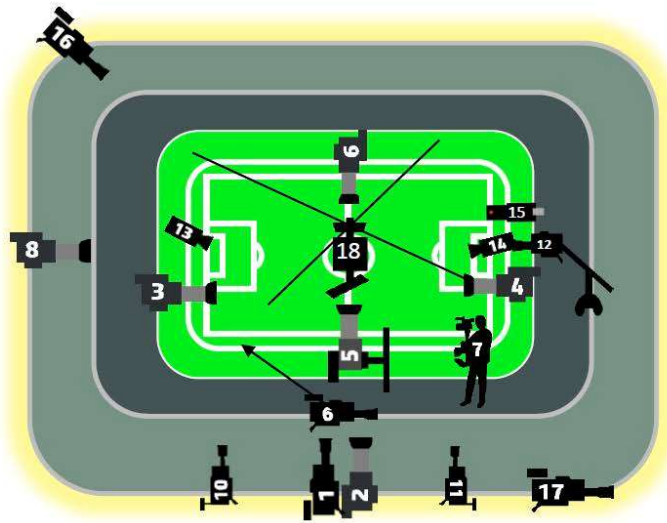
17 CAMERAS – OPTION C

#	Camera	اسم الكاميرا	#
1	MAIN CAM	الكاميرا الرئيسية	1
2	MAIN CLOSE	الكاميرا الرئيسية ذات البعد الأقرب	2
3	LEFT SUPER SLOMO	كاميرا السرعة البطيئة اليسرى	3
4	RIGHT SUPER SLOMO	كاميرا السرعة البطيئة اليمنى	4
5	ORBITER	الكاميرا المحورية	5
6	STEADICAM	الكاميرا المنحركة المحمولة	6
7	JIB	كاميرا الذراع المنحرفة	7
8	HIGH B-GOAL	الكاميرا المرتفعة خلف المرمى	8
9	REVERCE ANGLE High ORBITER LEFT	كاميرا الزاوية العكسية المحورية اليسرى المرتفعة	9
10	REVERCE ANGLE High ORBITER RIGHT	كاميرا الزاوية العكسية المحورية اليمنى المرتفعة	10
11	REVERCE ANGLE	كاميرا الزاوية العكسية	11
12	16M LEFT + PRESS CONF.	كاميرا خط 16 متر اليسرى + المؤتمر الصحفي	12
13	16M RIGHT	كاميرا خط 16 متر اليمنى	13
14	IN-GOAL LEFT	الكاميرا داخل المرمى الأيسر	14
15	IN-GOAL RIGHT	الكاميرا داخل المرمى الأيمن	15
16	BEAUTY CAM	كاميرا الزاوية الجمالية للطلح	16
17	BENCH+FLASH+ MIXEDZONE+SIDE	كاميرا المقاعدات + ردود الأفعال + المنطقة المختلطة	17



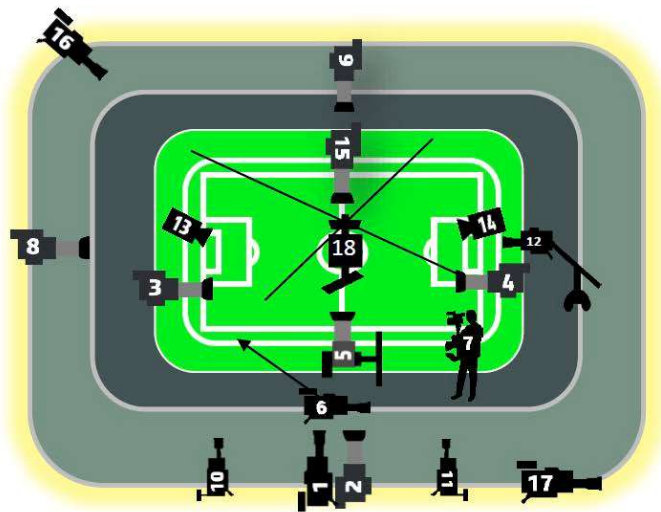
18 CAMERAS - OPTION A

#	Camera	اسم الكاميرا	#
1	MAIN CAM	الكاميرا الرئيسية	1
2	MAIN CLOSE	الكاميرا الرئيسية ذات البعد الأقرب	2
3	GOAL LEFT SUPER SLOMO	كاميرا السرعة البطيئة اليسرى	3
4	GOAL RIGHT	كاميرا السرعة البطيئة اليمنى	4
5	ORBITER	الكاميرا المحورية	5
15	HYPER MOTION	كاميرا المقلبات + ردود الأفعال + المنطقة المختلطة	6
7	STEADICAM	الكاميرا المتحركة المحمولة	7
8	HIGH B-GOAL	الكاميرا المرتفع خلف المرمى	8
9	REVERSE ANGLE	كاميرا الزاوية العكسية	9
10	16M LEFT	كاميرا خط 16 متر اليسرى	10
11	16M RIGHT	كاميرا خط 16 متر اليمنى	11
12	JIB	كاميرا الذراع المتحرك	12
13	IN-GOAL LEFT	الكاميرا داخل المرمى الأيسر	13
14	IN-GOAL RIGHT	الكاميرا داخل المرمى الأيمن	14
6	BENCH+FLASH+ MIXEDZONE+SIDE	الكاميرا المعلقة السرعة للملعب	15
16	BEAUTY CAM	كاميرا المؤثر المسحقي	16
17	PRESS CONF.	الكاميرا المعلقة - المكتوبية	17
18	SKYCAM		18



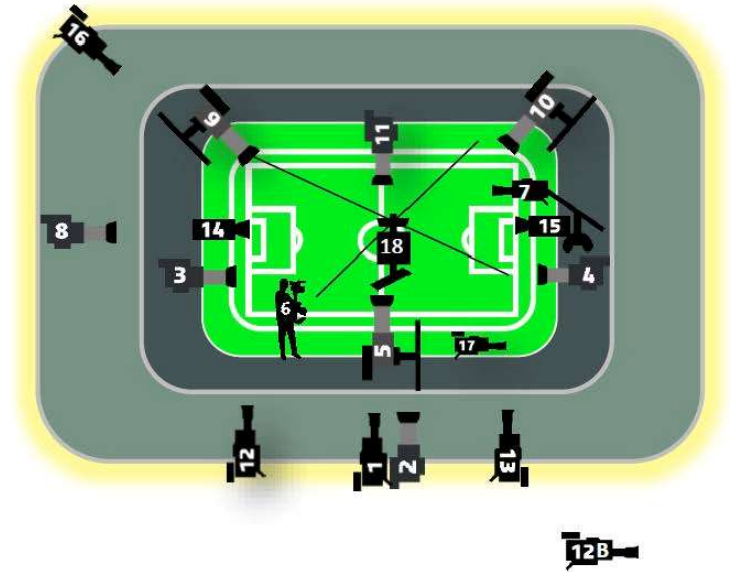
18 CAMERAS - OPTION B

#	Camera	اسم الكاميرا	#
1	MAIN CAM	الكاميرا الرئيسية	1
2	MAIN CLOSE	الكاميرا الرئيسية ذات البعد الأقرب	2
3	GOAL LEFT SUPER SLOMO	كاميرا السرعة البطيئة اليسرى	3
4	GOAL RIGHT	كاميرا السرعة البطيئة اليمنى	4
5	ORBITER	الكاميرا المحورية	5
6	BENCH+FLASH+ MIXEDZONE+SIDE	كاميرا المقلبات + ردود الأفعال + المنطقة المختلطة	6
7	STEADICAM	الكاميرا المتحركة المحمولة	7
8	HIGH B-GOAL	الكاميرا المرتفع خلف المرمى	8
9	REVERSE ANGLE HIGH	كاميرا الزاوية العكسية مرتفعة	9
10	16M LEFT	كاميرا خط 16 متر اليسرى	10
11	16M RIGHT	كاميرا خط 16 متر اليمنى	11
12	JIB	كاميرا الذراع المتحرك	12
13	IN-GOAL LEFT	الكاميرا داخل المرمى الأيسر	13
14	IN-GOAL RIGHT	الكاميرا داخل المرمى الأيمن	14
15	HYPER MOTION REVERSE ANGLE	الكاميرا المعلقة السرعة الزاوية العكسية	15
16	BEAUTY CAM	كاميرا الزاوية الجمالية للملعب	16
17	PRESS CONF.	كاميرا المؤثر المسحقي	17
18	SKYCAM	الكاميرا المعلقة - المكتوبية	18



#	Camera	اسم الكاميرا	#
1	MAIN CAM	الكاميرا الرئيسية	1
2	MAIN CLOSE	الكاميرا الرئيسية ذات البعد الأقرب	2
3	LEFT SUPER SLOMO	كاميرا السرعة البطيئة اليسرى	3
4	RIGHT SUPER SLOMO	كاميرا السرعة البطيئة اليمنى	4
5	ORBITER	الكاميرا المحورية	5
6	STEADICAM	الكاميرا المتحركة للمحمولة	6
7	JIB	كاميرا الذراع الممتدكة	7
8	HIGH B-GOAL	الكاميرا المرتفع خلف المرمى	8
9	REVERCE ANGLE ORBITER LEFT	كاميرا الزاوية العكسية المحورية اليسرى المرتفعة	9
10	REVERCE ANGLE ORBITER RIGHT	كاميرا الزاوية العكسية المحورية اليمنى المرتفعة	10
11	REVERCE ANGLE	كاميرا الزاوية العكسية	11
12	16M LEFT + PRESS CONF.	كاميرا خط 16 متر اليسرى + المؤنثين الصحفي	12
13	16M RIGHT	كاميرا خط 16 متر اليمنى	13
14	IN-GOAL LEFT	الكاميرا داخل المرمى الايسر	14
15	IN-GOAL RIGHT	الكاميرا داخل المرمى الايمن	15
16	BEAUTY CAM	كاميرا الزاوية الجمالية للملعب	16
17	BENCH+FLASH+ MIXEDZONE+SIDE	كاميرا المقاعد + ريمود الأوفيل + المنطقة المختلطة	17
18	SKYCAM	الكاميرا المعلقة - السكوتية	18

18 CAMERAS - OPTION C

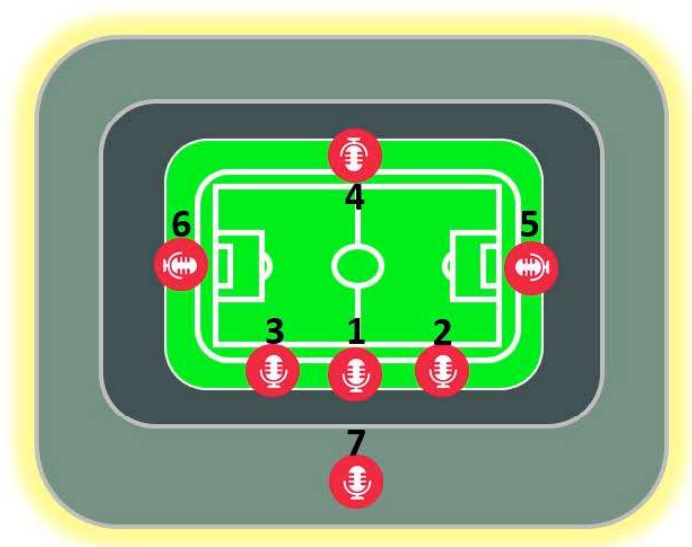


مواقع الميكروفونات

MICROPHONES PLAN

#	MIC
1	Pitch Side / Middle 1
2	Pitch Side 15m right 1
3	Pitch Side 15m left 2
4	Pitch Side / Middle 2 rev
5	Behind Goal 1
6	Behind Goal 2
7	Ambience Mic / Main Camera/ stereo mic

الميكروفون	#
بجانب الملعب / وسط	1
بجانب الملعب خط 16 / يمين	2
بجانب الملعب خط 16 / يسار	3
بجانب الملعب / عكسي	4
خلف المرمى / يمين	5
خلف المرمى / يسار	6
أجواء الملعب / بجانب الكاميرا أو رئيسية / ستيريو	7



Appendix (11): Guidelines for the Food and Beverages Facilities at the Stadium

1. Infrastructure requirement

Permanent Concession Sample:

Existing Facilities at Pro League Stadiums



Sample 1



Food Menu

Point of Sale 1

Point of Sale 2

Sample 2



Food Menu

Point of Sale 1

Point of Sale 2



</

- Permanent Concession unit must be equipped with electrical supply, refrigerator, air conditioner, steel rack or stand to keep the foodstuff in display, water supply hot&cold, storage area, sufficient lighting, telephone (data lines), and Food menu list with price in big size placed on the wall of Concession unit.
- Food Menu with Price must be in English and Arabic.
- Proper signage and direction towards concession units or F&B facilities must be placed around stadium to guide the spectators.

Temporary Concession Sample:

Sample 1



Sample 2



- Temporary concession unit must be equipped with electrical supply, refrigerator, steel rack or stand to keep the foodstuff in display, sufficient lighting, and food menu list with price in big size placed on the wall of Concession unit.

- Temporary concession unit must be sufficiently covered from all sides and does not expose any electrical wires, hazardous items, obstruct the pathways leads to the entrance gate of stadium etc.

Mobile stand (Food Truck) Sample:

Sample 1



Food

Point of

Sample 2



Food

Point of

- Each Mobile Stand (Food Truck) unit must be equipped with electrical supply, sufficient lighting, and Food menu list with price in big size placed on the wall of Mobile Stand unit.

Roving Vendor (Movable Salesperson) Sample:

Sample 1



Sample 2



Sample 3



2. Dress code for the sales staff

- Each salesperson at the point of sale shall wear proper and similar uniform.

3. Hygiene and food and health safety requirement

- All serving staff at the point of sale shall wear the Hair Cap and hand gloves to maintain the hygiene requirement.
- All foodstuff must have the expiry date information.
- Foods must be kept under the required temperature to preserve the quality.
- Adequate foods supply must be available at the point of sale all time
- Roving Vendor must use the approved equipment to sell the food and beverages.
- Dustbins must be kept for customers near to all point of sales in order to maintain the cleanliness.

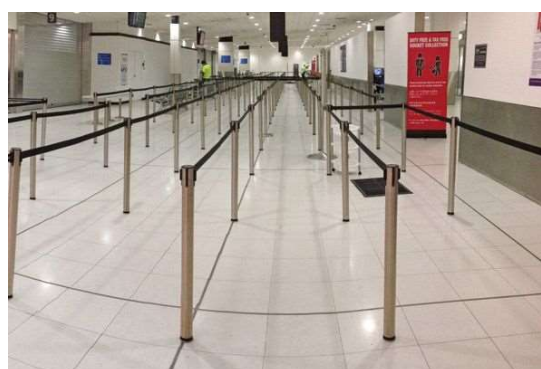
4. Queue separator

- Fixed or Temporary queue separator shall be placed outside the point of sale in order to prevent any chaos or incident.

Sample 1



Sample 2



5. Municipality and Police clearance

- The packaging of any food and beverages sold at the stadium must meet police, security and municipality regulations, and all selling and storage points must meet health regulations.
- All concessions units must obtain the municipality certificate for selling the food and beverages.

Note: All images used in this guideline is just for illustration only.

Appendix (12): Photographers' Seats behind the Goals

Height: 80 cm

Depth: 44 cm

Width: 47 cm

Seat Frame Made of: metal substance

Seating piece and backrest made of: PVC

Features: foldable

